

**East Asia and India**  
**International Security Export Controls**

2008/2/21(Thu)

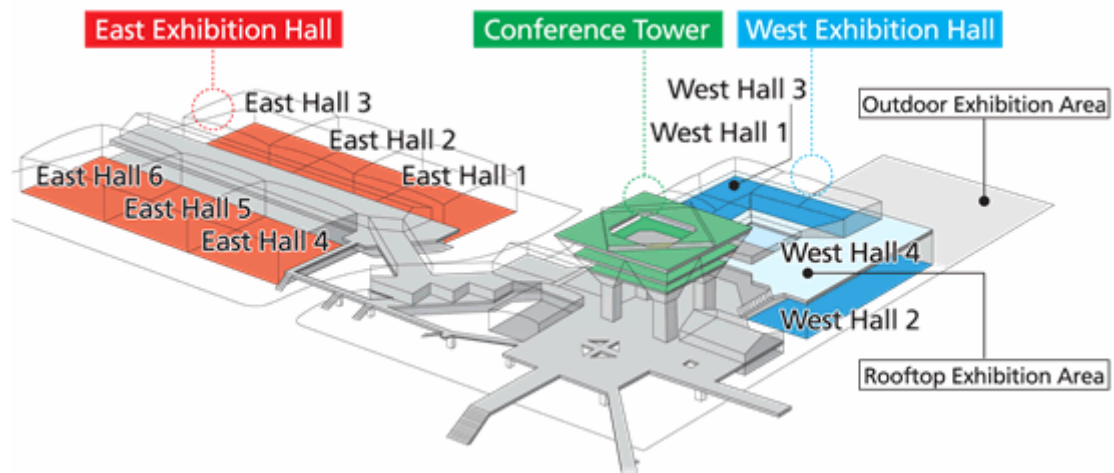
Tokyo Big Site Conference Tower 605-608

13:00 ~ 13:05	<p>Welcome &amp; Introduction</p> <p style="text-align: right;">Tsutomu Oshida Executive Managing Director Center for Information on Security Trade Control (CISTEC)</p>
13:05 ~ 14:15	<p>Recent Development of India's International Security Issues</p> <p style="text-align: right;">Takenori Horimoto Professor Faculty of Policy Studies Graduate School Shobi University</p>
14:15 ~ 14:30	Break
14:30 ~ 15:30	<p>Updated East Asian Export Controls</p> <p style="text-align: right;">Jay P. Nash Research Professional Center for International Trade and Security University of Georgia</p>
15:30 ~ 15:45	Break
15:45 ~ 16:45	<p>India's International Security</p> <p style="text-align: right;">Hiroshi Nakao Deputy General Manager Export Services Department Center for Information on Security Trade Control (CISTEC)</p> <p style="text-align: right;">Takehiko Kazama Senior Researcher Export Services Department Center for Information on Security Trade Control (CISTEC)</p>

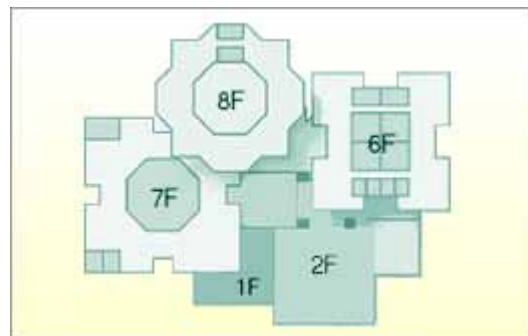
Session for "Updated East Asian Export Controls" is provided with simultaneous interpretation.

TOKYO BIG SITE - <http://www.bigsight.jp/english/index.html>

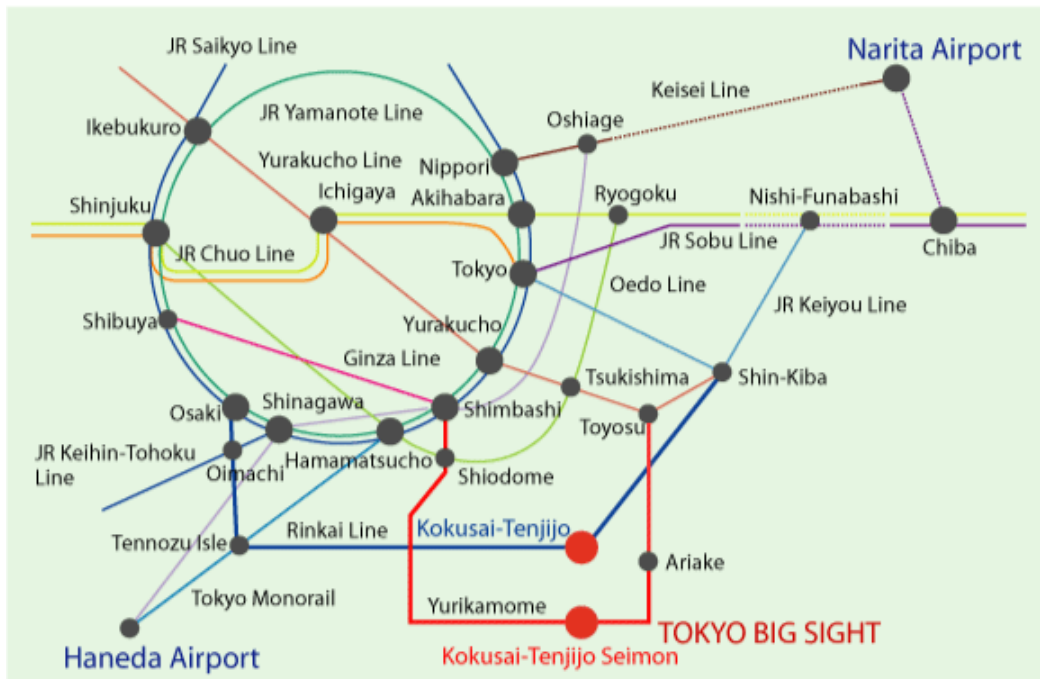
Conference Tower <http://www.bigsight.jp/english/organizer/index.html>



Conference Rooms [http://www.bigsight.jp/english/organizer/guide/guide\\_meeting.html](http://www.bigsight.jp/english/organizer/guide/guide_meeting.html)



ACCESS - <http://www.bigsight.jp/english/organizer/access/index.html>



## ■ By Train

---

### [Rinkai line](#)

About 7-mins. walk from Kokusai-Tenjijo Station

Osaki Sta. (JR) 13 mins. Kokusai-Tenjijo Sta. 5 mins. Shin-Kiba Sta.(JR,Subway)

\* Direct service at Osaki to JR Saikyo Line

Kokusai-Tenjijo Sta. JR Shibuya Sta. (about 20 mins.)  
JR Shinjuku Sta. (about 25 mins.)  
JR Ikebukuro Sta. (about 31 mins.)

### [Yurikamome](#)

About 3-mins. walk from Kokusai-Tenjijo-Seimon Station

Shimbashi Sta. (JR, Subways) 22 mins. Kokusai-Tenjijo Seimon Sta.

Toyosu Sta. (Subway) 8 mins. Kokusai-Tenjijo Seimon Sta.

## ■ By Bus

---

### [Toei Bus](#)

Tokyo Sta. (Yaesu Exit, JR) about 35 mins. Tokyo Big Sight

Monzen-Nakacho Sta. (Subway) about 30 mins. Tokyo Big Sight

Hamamatsucho Sta. (JR, Monorail) about 30 mins. Tokyo Big Sight

### [Airport Bus](#) ( [Limousine Bus](#) · [Keihin Kyuko Bus](#) )

[Haneda Airport](#) about 25 mins. Tokyo Big Sight (Limousine Bus, Keihin Kyuko Bus)

[Narita Airport](#) about 60 mins. Tokyo Big Sight (Limousine Bus)

[Tokyo City Air Terminal](#) about 20 mins. Tokyo Big Sight (Limousine Bus)

Some buses only run during events. Please check in advance.

### [Express Bus \(Keihin Kyuko Bus\)](#)

Yokohama Sta. (East Exit, JR) about 50 mins. Tokyo Big Sight (Keihin Kyuko Bus)

## ■ By Water Bus

---

### [Water Bus](#)

Hinode Pier (about 7 mins. walk from JR Hamamatsucho Station) 25 mins. Tokyo Big Sight 10 mins. Palette Town

## ■ By Car

---

### From center of Tokyo

About 20 mins. from Tokyo Sta. (JR, Subway)

### From Yokohama/Haneda

About 15 mins. from Haneda Airport

### From Chiba/Kasai

Metropolitan Expressway (Wangan Line) about 5 mins. from the Ariake Ramp