

13 September, 2008

The Association of International Security and Trade

7<sup>th</sup> Research Symposium

1<sup>st</sup> Session, “Export Control at Japanese Universities”

“Current Situation regarding Introduction of  
Export Control Scheme  
at Japanese Universities”

Tadashi Yoshida. Ph.D.

Manager of International Cooperation

Tohoku University

# Contents

1. Reason for conducting the Research
2. Background of the Research
3. Government Measures for Export Control at Universities
4. Analysis on “Guidance for dealing with sensitive technologies to conduct export control (for universities and research institutes)”
5. Current Situation in Export Control at Japanese Universities
6. Interview Survey to Universities, Public Firms and Research Institutes
7. Model of Mature Stage Regarding Issues on Developing Scheme for Export Control
8. Implication to Developing Better Scheme
9. Summary: What is needed to develop the scheme?

# 1. Reason for Conducting the Research

- Entrusted research on “How to respond the foreign exchange and foreign trade control laws” as the model program for development of the 21 century approach of industry-university-government cooperation from MEXT\*
- ✓ The model program consisted of approx. 10 research theme every year since FY2003 was entrusted to the universities that accepted the intellectual property office development program for university
- ✓ Our research is the first research that deals with export control at Japanese universities

\* MEXT: Ministry of Education, Culture, Sports, Science and Technology

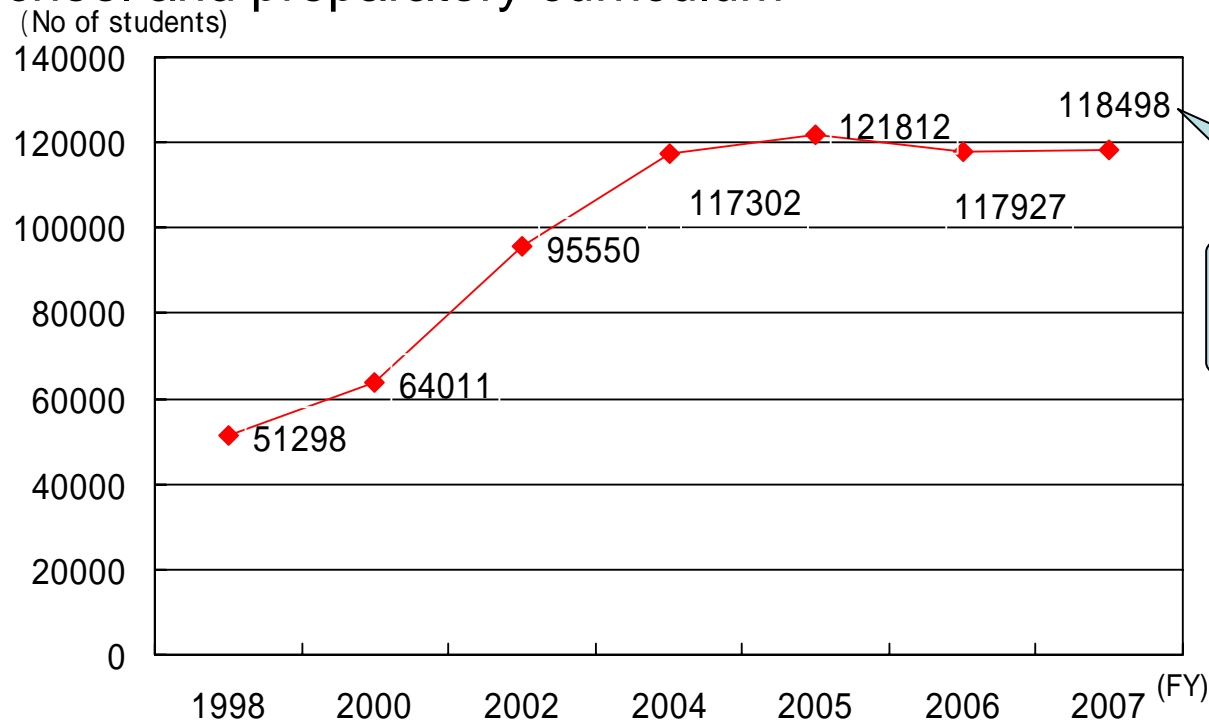
## 2. Background of the Research

- Advancement of internationalization at Japanese universities in both education and research
  - 1) Internationalization of education
    - Increasing overseas students
  - 2) Internationalization of research
    - Advancement of international industry-university-government cooperation
- ✓ More increasing nonresidents and foreign demanders
  - Increasing possibility of leaking items and technologies to be subject to export control

# 1) Internationalization of Education

## • Increasing number of overseas students

“Transition of number of overseas students at Graduate School, undergraduate School, Junior College, technical junior college, vocational school and preparatory curriculum”



10 times increase  
from 1998

Reference: Japan Student Services  
Organization (2007)

👉 「Overseas Students 300 thousand Plan」: Aim to increase overseas students to 300 thousand until 2020 based on collaboration among related ministries

## 2) Internationalization of Research

- ✓ Steadily increasing number of collaboration with overseas firms compared with collaboration with domestic firms
- ✓ Since FY2008 for 5 years, industry-university-government cooperation strategic development scheme ,  
“Advancement of international industry-university-government cooperative activity “ organized by MEXT has been conducted at 17 institutes

Industry-university cooperative activities with foreign firms at Japanese universities  
(Total No. and amount of commissioned and cooperative researches) (Unit: 1K JPY)

<b>FY</b>	<b>Total no. of activities</b>	<b>With foreign firms</b>	<b>Proportion</b>	<b>Total amount of research fee</b>	<b>With foreign firms</b>	<b>Proportion</b>
2003	23,041	60	0.26%	107,525,182	812,778	0.76%
2004	25,964	71	0.27%	127,603,151	218,090	0.17%
2005	29,948	92	0.31%	158,791,976	453,927	0.29%

Source: MEXT science and technology academic committee (2006)

### 3 . Government measures for export control at universities

✓ 7 official notices were given by METI\* and MEXT since 2005 until now

{Example of the official notices}

- “Enforcement of export control at tertiary educational institutes”
  - Date of issues : 1 April, 2005, Issued by METI
- “Enforcement of export control at university and public research institutes”
  - Date of issue: 24 March, 2006, Issued by MEXT
  - Specify conducting an explanatory meeting of export control in all prefectures by METI
- “Guidance for dealing with sensitive technologies to conduct export control (for universities and research institutes)”
  - Date of issue : January 2008, Issued by Security Export Control division of METI

\* METI: Ministry of Economy, Trade and Industry

## 4 . Analysis on “Guidance for dealing with sensitive technologies to conduct export control (for universities and research institutes)”

### 1 ) Background and objective of issuing guidance

- The past official notices were to pay attention to export control
- This guidance focuses on management of offering technologies, and indicates what we should do for conducting organizational export control effectively

### 2 ) Contents of the guidance

Indispensable actions that result in against the law unless they are done

- An organization should immediately identify existence of related technologies, and conduct an applicable judgment, and confirmation of usage and demander

Recommended actions

- More concrete actions, which the organizations are required to do

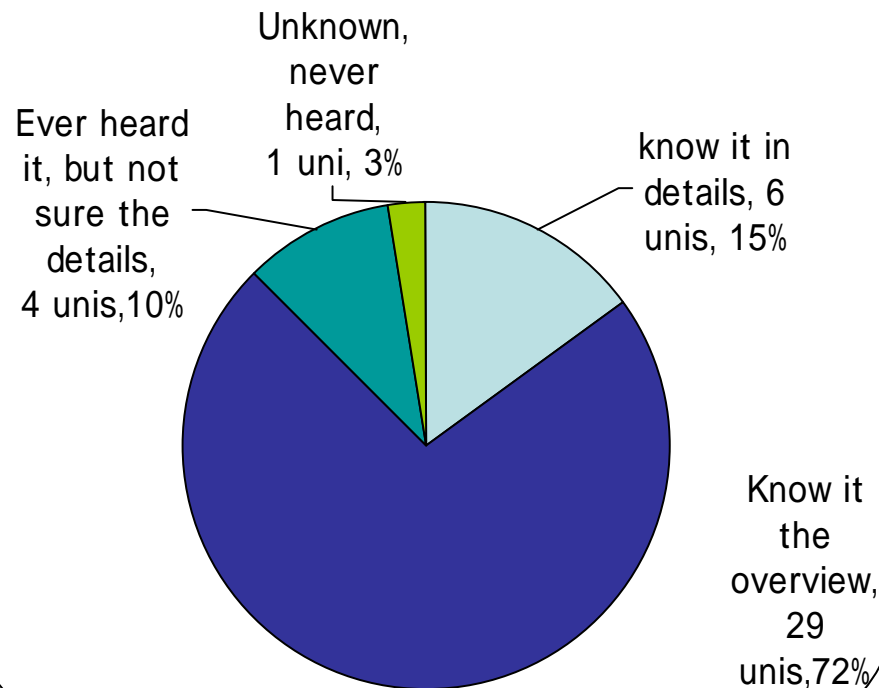
## 5 . Current Situation in Export Control at Japanese Universities

- “Questionnaire survey on knowledge and approach of organizational export control at universities based on the foreign exchange and foreign trade law “
  - Objective of survey: Recognize current situation and future action regarding development of an organizational export control scheme at Japanese universities
  - Date of conducted survey: August, 2007
  - Responded organizations: 40 universities out of 42 universities entrusted “The intellectual property office development program” organized by MEXT
  - Respondents: working-level persons in an industry-university cooperation office
  - Survey on “Knowledge of Export Control” and “Approach to export control at an university”

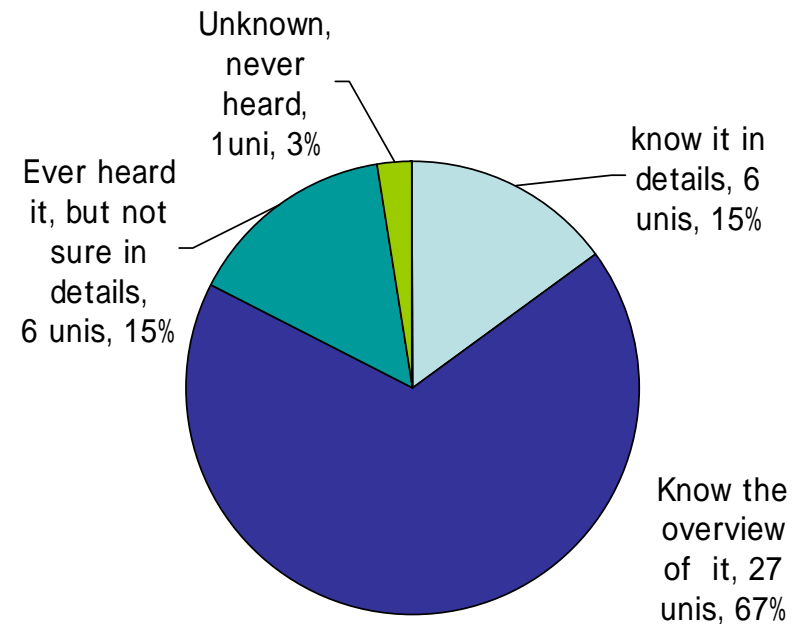
# Results of the Questionnaire Survey

## § 1 . Knowledge of export control

Q: Have you ever known what is export control based on the foreign exchange and trade control law?



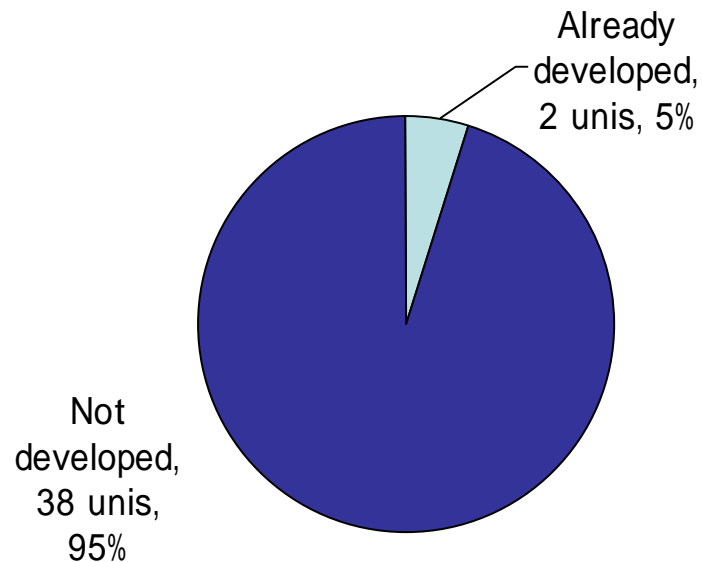
Q: Have you ever known "List control" and "Catch-all control"?



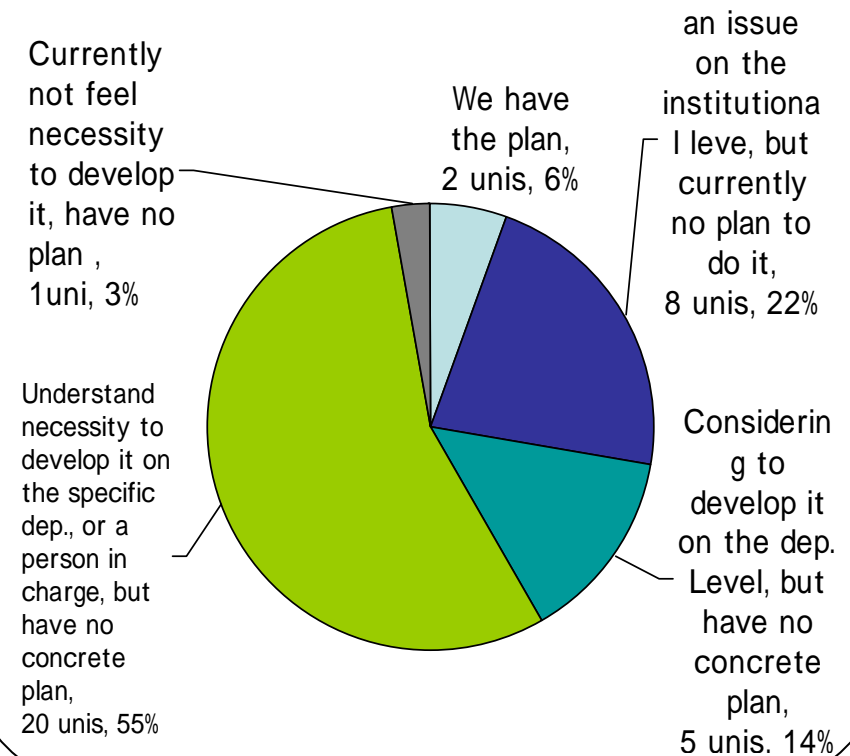
# Results of the questionnaire survey

## § 2 . Approach to export control

Q: Has the export control scheme already been developed at your institute?



Q: Does your institute have a plan to develop the export control scheme at the institute?



# Analysis on the Results of the Questionnaire survey

§ 1 . Regarding knowledge of export control based on the foreign exchange and trade control law


- ✓ Approx. 70% of the respondents have knowledge about what are “Export control”, and “List control” and “Catch-all control”
- ✓ Only approx. 15% of them have knowledge about them in details
- ✓ More than 10% of them have no knowledge

 Cannot be optimistic about the fact, considering social impact in case they are against the law

# Analysis on the results of the questionnaire survey

§ 2 . Regarding approach to export control based on the foreign exchange and trade control law

- ✓ Only 2 universities have already developed the export control scheme
- ✓ Only 2 universities have plan to develop it
- ✓ Approx. 60% of them (21 universities) have never taken into consideration about development of it

 As the context, the issue would be raised from publicity of the contents toward the practitioners

 Lack of sense of issue in the organization

## 6 . Interview Survey to Universities, Public Firms and Research Institutes

### 1) Organizations surveyed

University

: Already developed the scheme: 2 universities

: Plan to develop the scheme: 2 universities

Firm : Those actively internationalized: 3 firms

Public Research Institutes: Those dealing with more items and technologies being subject to control than others: 2 institutes

### 2) Contents of the survey

- ✓ Reason for establishment of export control rules and scheme
- ✓ Current situation regarding management of the scheme
- ✓ Issues in export control

# Results of the Interview Survey

## Regarding the 4 universities

- ✓ The 2 universities that have already developed the scheme started to do it on 2006
- ✓ Lack of accumulation of knowledge
- ✓ Difference in how to commence to do it
  - ◆ Top-down method: Kyushu institute of technology
  - ◆ Bottom-up method: Tokyo university of science

{Context of raising difference}

☞ Difference between national university cooperation and private university

- Private university: Able to employ experts person and to develop the scheme with their expertise
- National university cooperation: Difficult to hire experts. Office clerks take in charge of export control

# Results of the Interview Survey

Regarding 2 public research institutes

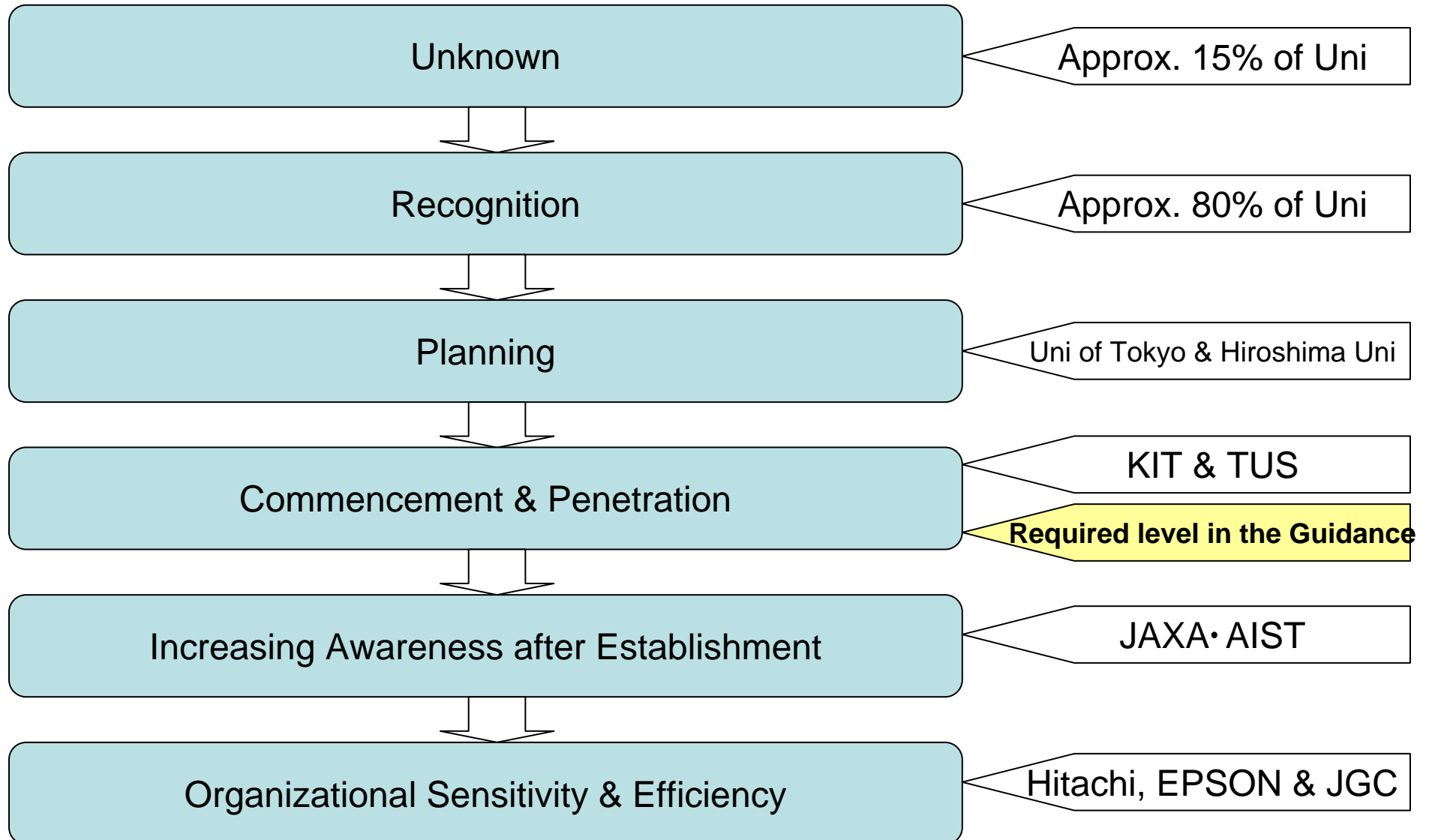
- ✓ As the public research institute, development of strict export control scheme is required
  - {Measures}
  - ✓ National institute of advanced industrial science and technology: Hire working expert from a public firm
  - ✓ Japan Aerospace Exploration Agency: Apply more strict internal rules
  
- ✓ Increasing awareness of export control among researchers seems to be the biggest issue, partly due to short history as an organization

# Results of the Interview Survey

Regarding 3 public firms

- ✓ All 3 firms commenced organizational export control on 1986 due to the official notice from METI
  
- ✓ Already developed the organizational export control scheme after a long period of time
  
- ✓ Target to execute 'efficient' export control
  - Realize the efficient export control based on clarification of roles of each employee and where responsibility lies in an organization

# 7 . Model of Mature Stage Regarding Issues on Developing Scheme of Export Control



## 8 . Implication to Developing Better Scheme

The universities on the stage before “Commencement & Penetration” are required to develop the organizational export control scheme immediately based on the Guidance

The universities on the stage of “Unknown”

- Top management needs to have high recognition regarding export control and to make immediate decision in top-down method

The universities on the stage of “Recognition”

- Important to do action to develop the scheme since some staff have already been aware of necessity to do it
- The bottom-up method might be applied to develop the scheme; however, high recognition of top management is required to clarify where responsibility lies in the organization

## 9. Summary :

### What is needed to develop the scheme?

- Under the current situation, top management that does not recognize what is essence of export control seems to make an order to develop the scheme to subordinates that have no knowledge about export control
  - ✓ Continuous notification to top management and their subordinates is necessary
- Setting up consultation service for universities and research institutes could be an urgent issue
  - ✓ Reasons: Difficult to hire an expert, in the most cases, existing staff members that have less knowledge about export control could deal with it
- Issues in the department taking in charge of export control : Either the department of industry-university cooperation does it or the department of legal affaire does it
  - ✓ Necessary to clarify power balance and responsibility among the departments as the organization